

PLANITHERM®



Description

PLANITHERM is a high performing low emissive coated glass for insulating glass units. It is made of a clear glass on which magnetron sputtering under vacuum deposits a thin transparent coating. The coating reflects the far infrared radiation which limits the heat transfer by radiation.

APPLICATIONS

PLANITHERM, low-E coated glass, can be used in all insulating glass units, for new buildings or renovation works:

- Windows in domestic buildings;
- Conservatories;
- Windows and facades in non residential buildings.

It can be integrated in any frame type.

RANGE

PLANITHERM is available in :

- Sizes: Jumbo size (PLF) 6000 x 3210mm
- Split sizes on request
- Standard thickness: 4-6 mm (other on request)

PROCESSING

- Available in annealed or to be tempered versions*
- To be assembled in insulating glazing unit
- Edge deletion required**
- Enameling not compatible

**Except for PLANITHERM HN, which consists in one version for two applications: annealed or tempered - **Except for PLANITHERM HN edge-deletion is not required*

Refers to the processing guidances of each product for more details about the processing conditions or contact the local Technical Support Manager.

Performance

DGU values calculated with Clear Substrate as inner pane. Average performance values of DGU (6+12+6 mm) with coating on surface #3, according to the standards ISO 9050 m1 /EN 6732 and to the standards NFRC 100.

Saint-Gobain Glass Glass reserves the right to change product performance features without notice or obligation. Contact your Saint-Gobain sales representative to check the availability of each product in your country.

Standards ISO 9050 m1 / EN 6732

Product	Light Transmittance LT (%)	Solar Factor g/SHGC	Shading Coefficient SC	External Light Reflectance LRe (%)	Internal Light Reflectance LRI (%)	U-Value W/(m ² .K) 12mm air	U-Value W/(m ² .K) 16mm argon
PLANITHERM XN II	81	0.60	0.69	11	12	1.6	1.1
PLANITHERM 1.16 II	78	0.60	0.69	12	12	1.7	1.2
PLANITHERM 1.3T	75	0.62	0.71	12	12	1.8	1.3
PLANITHERM LUX II	79	0.67	0.77	12	13	1.7	1.3
PLANITHERM ONE II	70	0.48	0.55	22	22	1.5	1.0
PLANITHERM HN annealed	68	0.62	0.71	12	13	1.8	1.4
PLANITHERM HN tempered	73	0.62	0.71	12	11	1.8	1.4
PLANITHERM 4S EVO (Coating on surface #2 - Annealed only)	60	0.37	0.42	22	26	1.5	1.0

Product	Light Transmittance LT (%)	Solar Factor g/SHGC	Shading Coefficient SC	External Light Reflectance LRe (%)	Internal Light Reflectance LRe (%)	U-Value W/(m ² .K) 12mm air	U-Value W/(m ² .K) 16mm argon
PLANISTAR SUN (Coating on surface #2 - Annealed only)	71	0.36	0.41	14	15	1.5	1.0

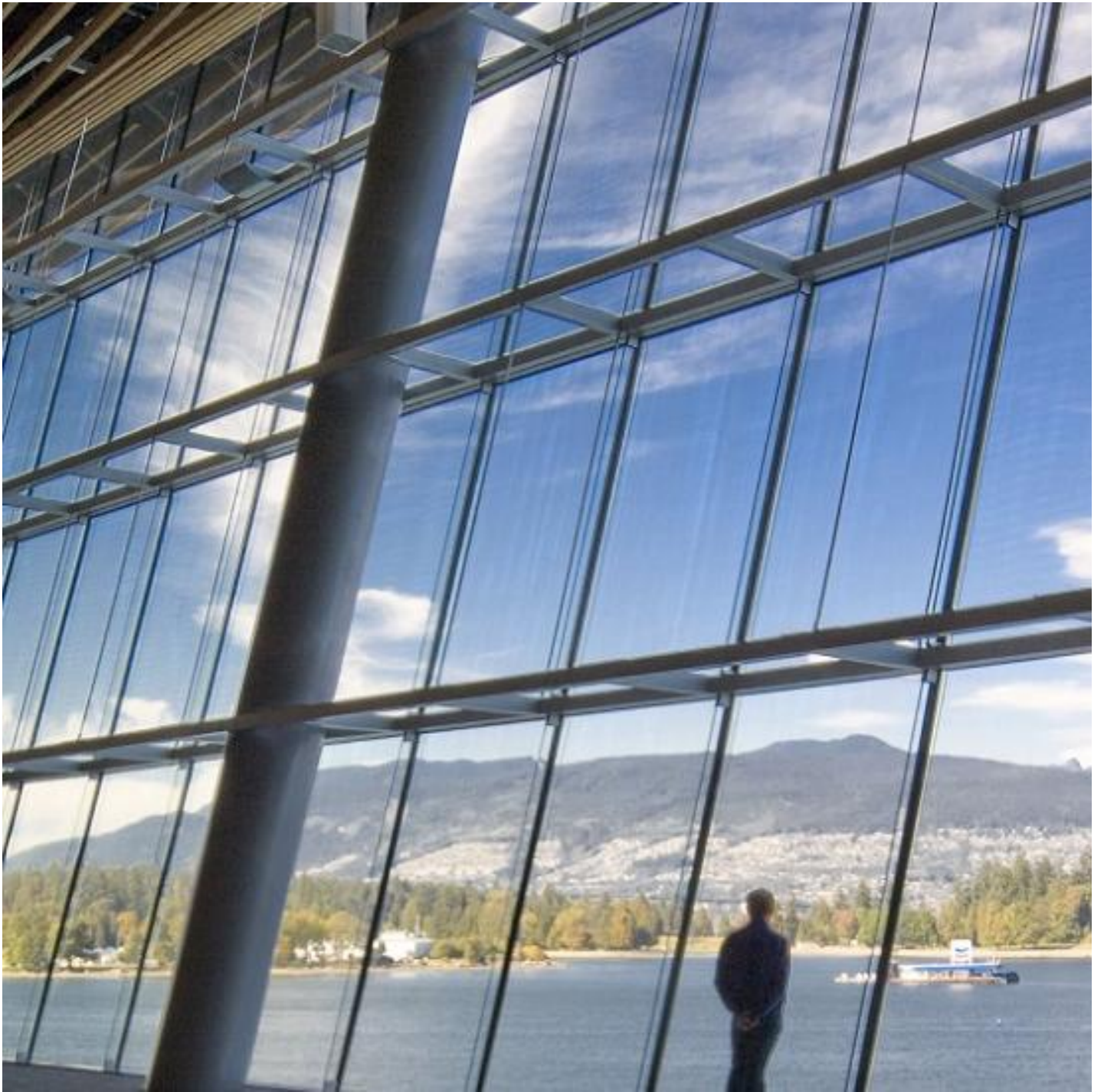
Standard NFRC 100

Product	Light Transmittance LT (%)	Solar Factor g/SHGC	Shading Coefficient SC	External Light Reflectance LRe (%)	Internal Light Reflectance LRe (%)	U-Value W/(m ² .K) 12mm air	U-Value W/(m ² .K) 16mm argon
PLANITHERM XN II	81	0.61	0.70	11	12	1.7	1.4
PLANITHERM 1.16 II	78	0.61	0.70	12	12	1.7	1.5
PLANITHERM 1.3T	75	0.62	0.71	12	12	1.8	1.6
PLANITHERM LUX II	79	0.68	0.78	12	13	1.7	1.5
PLANITHERM ONE II	70	0.48	0.55	22	22	1.6	1.4
PLANITHERM HN annealed	68	0.62	0.71	12	13	1.9	1.7
PLANITHERM HN tempered	73	0.62	0.71	12	11	1.8	1.6
PLANITHERM 4S EVO (Coating on surface #2 - Annealed only)	60	0.37	0.42	22	26	1.6	1.4
PLANISTAR SUN (Coating on surface #2 - Annealed only)	71	0.35	0.40	14	15	1.6	1.4

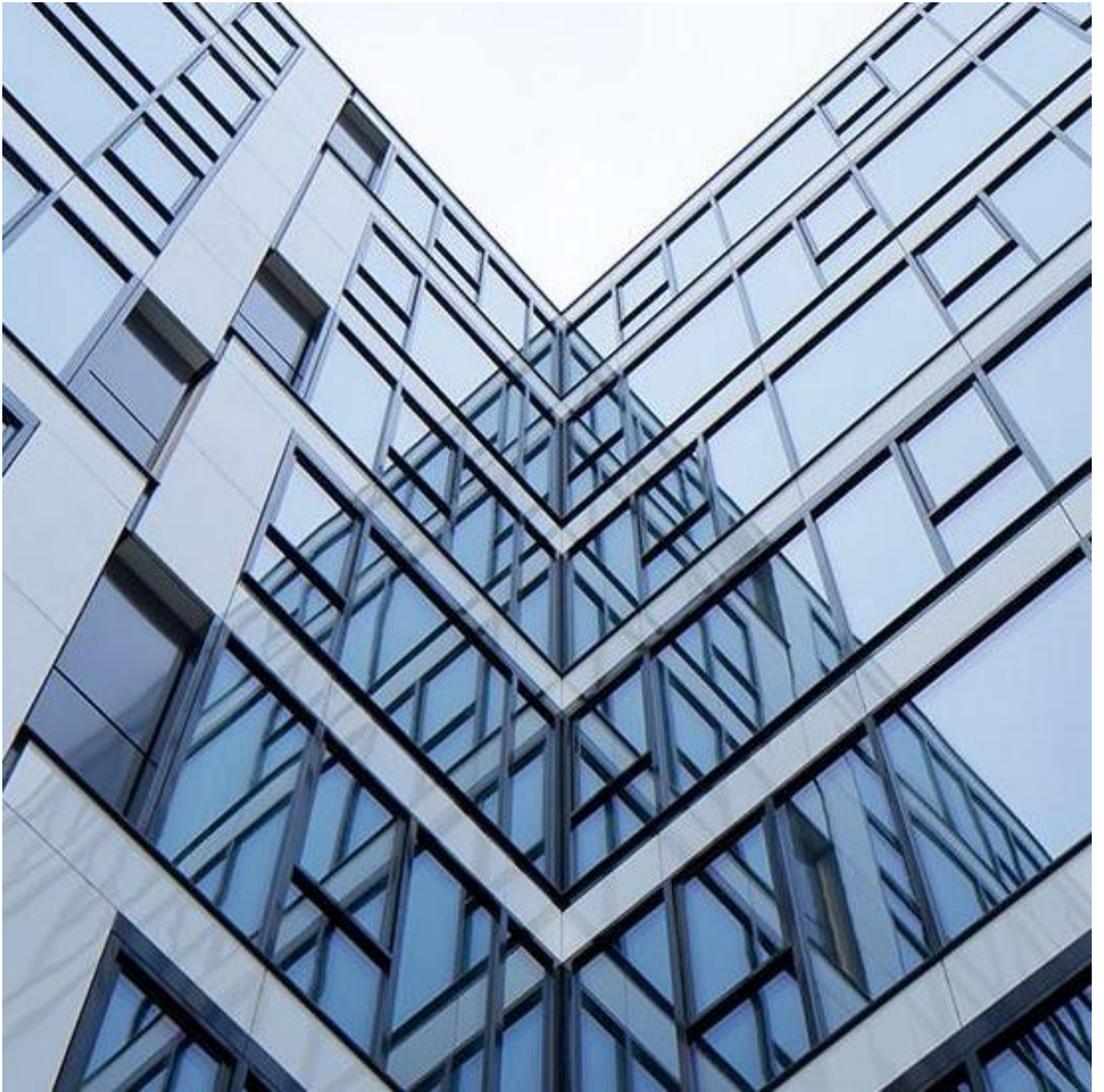
FIND OUT MORE



ECLAZ®



DIAMANT®



COOL-LITE® SKN



COOL-LITE® ST

[Find a distributor](#)