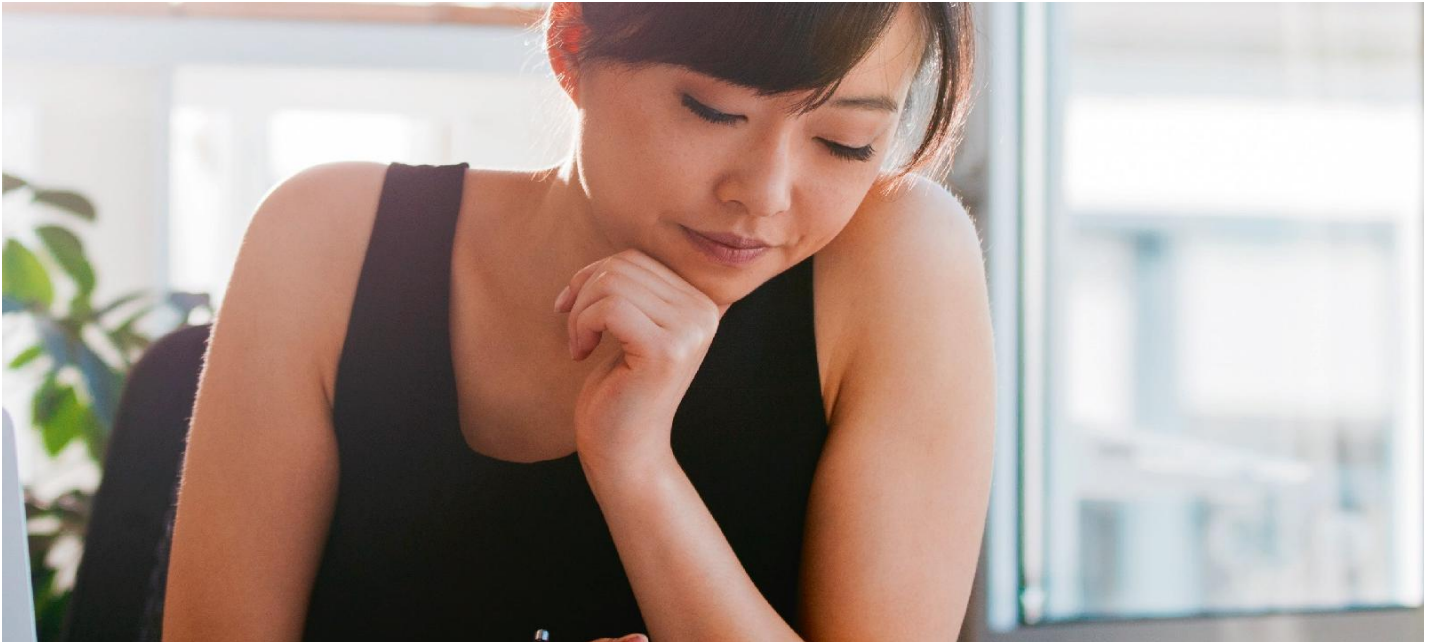


COOL-LITE® ET



Description

COOL-LITE E combines the twin requirements with greater light and lower heat. With optimized light transmission, it is configured to let more natural light inside thus ensuring optimum lighting for the interiors and cut down the spend on artificial lighting. Transparency also stretches spaces and blends interiors with exteriors. Research have demonstrated that such better controlled environments improve occupants' health, productivity and comfort levels.

APPLICATION

COOL-LITE E can be used in both single glazing and double glazing applications, such as:

- Windows in traditional façades
- Curtain wallings
- Exterior structural sealant glazing
- Exterior bolted glass assemblies
- Double-skin applications
- Cladding of external walls
- Overhead and atria glazing

RANGE

COOL-LITE E are available in :

- Sizes: Jumbo size (PLF) 6000 x 3210mm

- Split sizes on request
- Standard thickness: 4-6-8mm (other on request)

PROCESSING

- One version for two applications: annealed or tempered
- Can be used in single glazing application
- Edge deletion is not required
- Possibility of enameling¹
- Bendable
- Easy to handle
- Long shelf life

Refers to the processing guidances of each product for more details about the processing conditions or contact the local Technical Support Manager.

PERFORMANCE

DGU values calculated with Clear Substrate as inner pane. Average performance values of DGU (6+12+6 mm) with coating on surface #2, according to the standards ISO 9050 m1 /EN 6732 and to the standards NFRC 100.

Saint-Gobain Glass Glass reserves the right to change product performance features without notice or obligation. Other colors are available. Contact your Saint-Gobain sales representative to check the availability of each product in your country.

Standards ISO 9050 m1 / EN 6732								
Product	Light Transmittance LT (%)	Solar Factor g/SHGC	Shading Coefficient SC	Selectivity LT/G	External Light Reflectance LRe (%)	Internal Light Reflectance LRi (%)	U-Value W/(m ² .K) 12 mm air	U-Value W/(m ² .K) 16 mm argon
ET 150	46	0.43	0.49	0.94	15	17	2.6	2.3
ET 135	31	0.29	0.33	0.94	24	14	2.1	1.7
ET 125	26	0.24	0.27	0.96	29	15	2.0	1.6

Standard NFRC 100								
Product	Light Transmittance LT (%)	Solar Factor g/SHGC	Shading Coefficient SC	Selectivity LT/G	External Light Reflectance LRe (%)	Internal Light Reflectance LRi (%)	U-Value W/(m ² .K) 12 mm air	U-Value W/(m ² .K) 16 mm argon
ET 150	45	0.43	0.49	1.05	15	17	2.45	2.29
ET 135	31	0.30	0.34	1.03	24	14	2.03	1.85
ET 125	25	0.25	0.29	1.00	29	15	1.95	1.76

FIND OUT MORE



COOL-LITE® ST



COOL-LITE® K



PARSOL®

[Find a distributor](#)