

COOL-LITE® K



Description

This solution ensures the heating up of interior spaces from heating up while maximizing daylight. Thus the cooling, heating and lighting energy required is sustainably reduced; the effect is a bright atmosphere and comfortable room temperature in any season.

APPLICATIONS

Thanks to an advanced combination of solar, thermal and light output mix performances, aesthetics and processing flexibility, COOL-LITE K is the perfect product for several architectural projects, like:

:

- Office buildings
- Mixed used buildings
- Education buildings
- Health buildings
- Hotels, restaurants

RANGE

COOL-LITE K is available in :

- Sizes: Jumbo size (PLF) 6000 x 3210mm
- Split sizes on request
- Standard thickness: 4-6-8mm (other on request)

PROCESSING

- Two versions are available: temperable or to be tempered
- To be assembled in double glazing only
- Edge deletion mandatory

For further information on the processing conditions of each product refer to the processing guidelines or reach the local Technical Support Manager

PERFORMANCE

The tables below detail the performances of our coatings. Values are given for DGU with clear substrate Planiclear. 3 tables are available :

- DGU 6+12+6 mm with coating on surface #2, according to the standards ISO 9050 m1 / EN 6732
- DGU 6+12+6 mm with coating on surface #2, according to the standards NFRC 100
- DGU 6+16+4 mm with coating on surface #2, according to the standards EN 410, EN 673 and EN ISO 140-3/717-1

Saint-Gobain Glass Glass reserves the right to change product performance features without notice or obligation. Contact your Saint-Gobain sales representative to check the availability of each product in your country.

DGU 6-12-6 / Standards ISO 9050 m1 / EN 6732

PRODUCT	Light Transmittance LT (%)	Solar Factor g/SHGC	Shading Coefficient SC	Selectivity LT/g	External Light Reflectance LRe (%)	Internal Light Reflectance LRi (%)	U-Value W/(m ² .K) 12mm air	U-Value W/(m ² .K) 16 mm argon	Process
KN 130 II	31	0.25	0.29	1.24	21	13	1.81	1.38	to be tempered
KN 166 II	60	0.38	0.44	1.58	21	25	1.54	1.03	to be tempered
KS 138 II	36	0.25	0.29	1.44	40	20	1.63	1.15	to be tempered
KS 146 II	42	0.28	0.32	1.45	33	19	1.63	1.15	to be tempered
KS 150 II	45	0.34	0.39	1.32	28	16	1.63	1.15	to be tempered
KNT 140	37	0.29	0.33	1.28	22	11	1.78	1.34	temperable
KNT 155	47	0.37	0.43	1.27	17	10	1.88	1.35	temperable
KNT 164	57	0.46	0.53	1.24	14	10	1.88	1.46	temperable

PRODUCT	Light Transmittance LT (%)	Solar Factor g/SHGC	Shading Coefficient SC	Selectivity LT/g	External Light Reflectance LRe (%)	Internal Light Reflectance L Ri (%)	U-Value W/(m ² .K) 12mm air	U-Value W/(m ² .K) 16 mm argon	Process
KG 137 (tempered)	34	0.29	0.33	1.17	33	31	1.66	1.18	annealing & tempering

DGU 6-12-6 / Standard NFRC 100

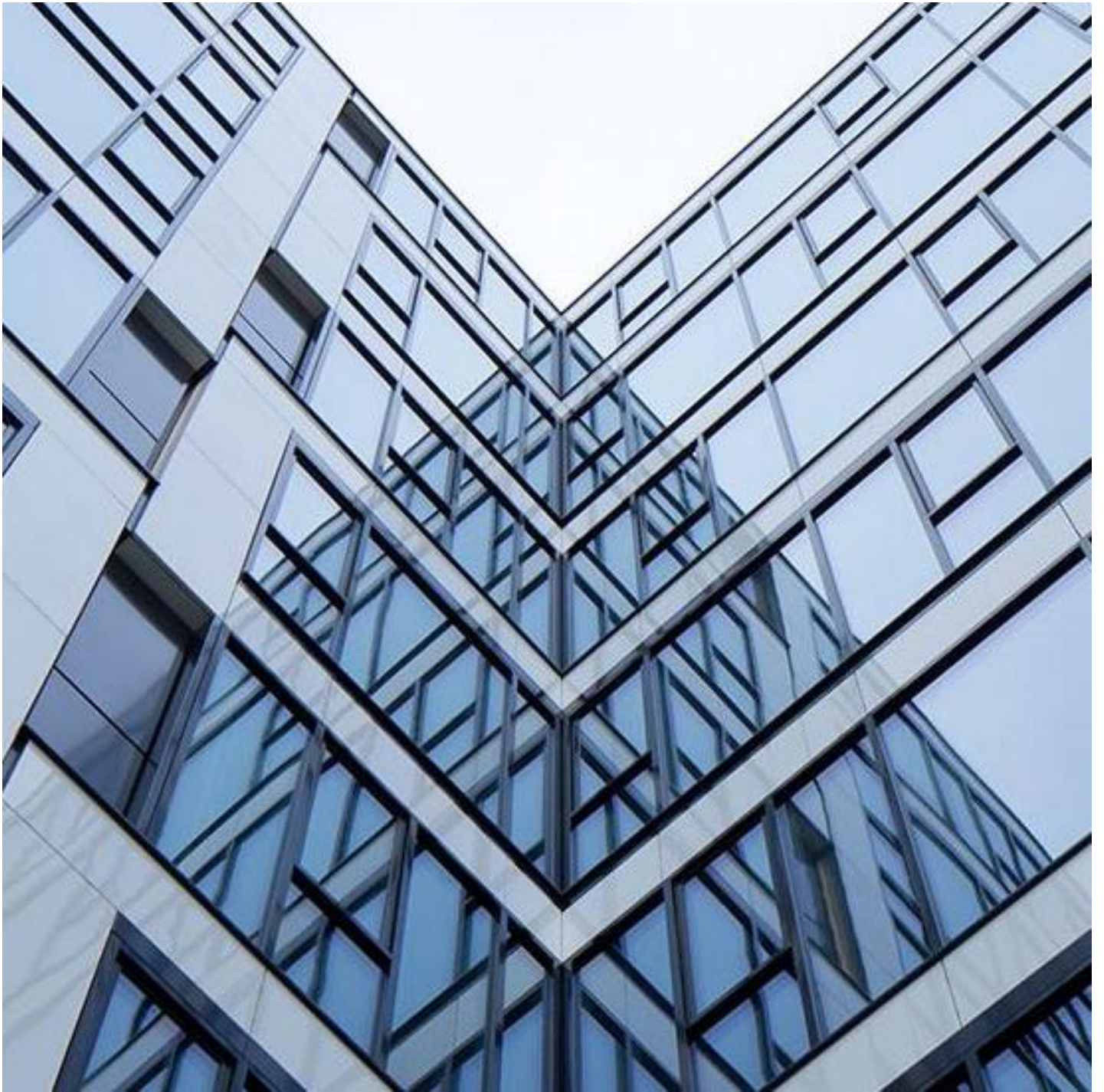
PRODUCT	Light Transmittance LT (%)	Solar Factor g/SHGC	Shading Coefficient SC	Selectivity LT/g	External Light Reflectance LRe (%)	Internal Light Reflectance L Ri (%)	U-Value W/(m ² .K) 12mm air	U-Value W/(m ² .K) 16 mm argon	Process
KN 130 II	31	0.25	0.29	1.24	21	13	1.83	1.62	to be tempered
KN 166 II	60	0.36	0.42	1.67	21	25	1.54	1.41	to be tempered
KS 138 II	36	0.25	0.28	1.44	38	20	1.67	1.46	to be tempered
KS 146 II	42	0.28	0.32	1.50	33	19	1.67	1.46	to be tempered
KS 150 II	45	0.33	0.38	1.36	28	16	1.67	1.46	to be tempered
KNT 140	37	0.29	0.33	1.28	22	11	1.80	1.59	tempered
KNT 155	47	0.37	0.42	1.27	17	10	1.83	1.63	tempered
KNT 164	57	0.46	0.53	1.24	14	10	1.87	1.67	tempered
KG 137 (tempered)	34	0.28	0.32	1.21	33	31	1.70	1.49	annealing & tempering

DGU 6-16-4 / Standards ISO 9050 m1 / EN 6732

PRODUCT	Light Transmittance LT (%)	Solar Factor g	Shading Coefficient SC	Selectivity LT/g	External Light Reflectance LRe (%)	Internal Light Reflectance L Ri (%)	U-Value W/(m ² .K) 16 mm argon
KN 130 II	31	0,24	0,28	1,28	21	13	1,4
KN 166 II	60	0,39	0,45	1,54	20	22	1,0
KS 138 II	37	0,25	0,29	1,48	38	17	1,1
KS 146 II	43	0,29	0,33	1,43	33	19	1,2
KS 150 II	46	0,35	0,40	1,34	29	16	1,2

PRODUCT	Light Transmittance LT (%)	Solar Factor g	Shading Coefficient SC	Selectivity LT/g	External Light Reflectance LRe (%)	Internal Light Reflectance L Ri (%)	U-Value W/(m ² .K) 16 mm argon
KNT 140	38	0,27	0,31	1,41	22	9	1,1
KNT 155	48	0,35	0,44	1,37	16	7	1,1
KNT 164	58	0,42	0,49	1,38	13	7	1,1
KG 137 (tempered)	34	0,28	0,32	1,21	33	28	1,1

FIND OUT MORE



COOL-LITE® SKN



COOL-LITE® ST



PARSOL®

[Find a distributor](#)