



< HUMANITI - Canada
©Adrien Williams

THE ESSENTIAL NORTH AMERICA

GATE:01 FRÖSUNDAVIK - Sweden

©Lasse Olsson Foto

SAINT-GOBAIN GLASS



Saint-Gobain Group's vision is to be the worldwide leader in light and sustainable construction. It's integrated solutions for the renovation of public and private buildings, light construction and decarbonization are developed through a continuous innovation process and provide sustainability and performance.

Saint-Gobain Glass cares about building better for people and the planet by offering glass solutions for façades, windows, interior design and protection that deliver performance and sustainability. We strive to serve and support all construction stake holders involved in new-build and renovation projects.

In every living and working place, wherever comfort, performance and safety are required, we fulfill the needs of our customers, from small contractors and installers to big processors, manufacturers or architects. Our teams are guided by one single ambition: to be considered your preferred partner by staying close to you to anticipate your needs and providing innovative solutions for sustainable construction.

SAINT-GOBAIN CONSTRUCTION BRANDS IN NORTH AMERICA

The Saint-Gobain Group has leading brands in the construction market that offer solutions for buildings and infrastructure.



OUR PRESENCE IN AMERICA, EUROPE AND ASIA FOR YOUR PROJECTS

MANUFACTURING FACILITIES

High performance glass combining energy efficiency and caring about people and the environment.

- Clear and tinted glass
- Patterned glass
- Coated glass
- Laminated glass
- Mirrors

GLASS PROCESSORS FOR INTERNATIONAL PROJECTS

- Windows
- Façade
- Interior Design
- Specialties (domestic appliances, active glazing, commercial refrigeration, fire and bullet protection...)

MANUFACTURING FACILITIES FIGURES

- 31 floats
- 14 coaters
- 1 patterned line



THE SAINT-GOBAIN GLASS INTERNATIONAL TEAM

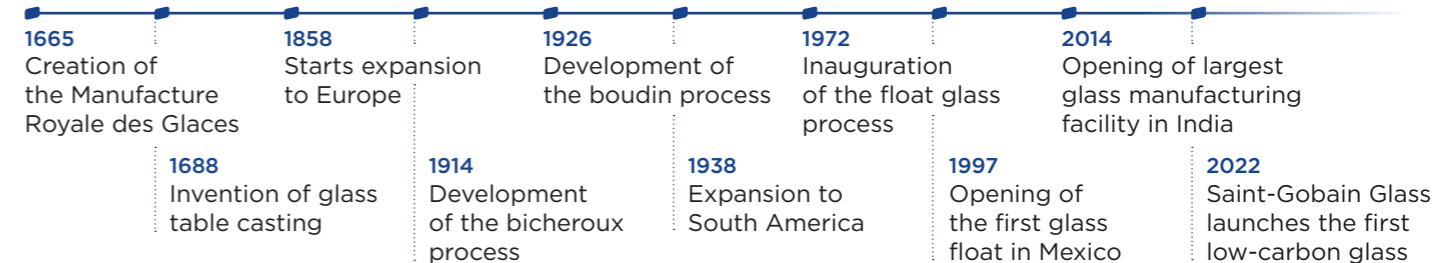
Founded in 1962, the international team represents Saint-Gobain's export business and provides the full Saint-Gobain flat glass range of both, basic glass and processed product, coming from the group's different factories worldwide

LOCAL REPRESENTATIVES

Our sales and technical team across the region is on hand to be by your side at every step of your project.

A dedicated team of experts can provide you with valuable support such as a sustainability analysis, structural calculations, daylighting analysis and acoustic performance calculations for glass during the design stage thereby, helping you choose the most suitable glass options for your projects.

SAINT-GOBAIN GLASS TIMELINE





↑
TOM PATTERSON
THEATRE - Canada
 ©Scott Norsworthy

GLASS FOR SUSTAINABLE CONSTRUCTION

better buildings, reduced environmental impacts and improved indoor conditions for the health and well-being of occupants. We understand that sustainable construction is not just about the process but also how the building will be used. For this purpose, we provide our customers with innovative solutions that support their journey towards sustainability, and we advocate for better policies, standards, and practices within the construction market.

Saint-Gobain Glass offers a complete range of energy efficient coated glass and insulated glazing. With solar control, low emissivity, low maintenance and transparency, our glass meets the requirements of low energy consumption buildings.

The technology behind solar control and low emissivity is a thin transparent coating of metallic oxides, deposited on one or two glass panes of a double or triple glazing unit. Being an invisible thermal shield, this coating retains the heat inside the building and captures the solar energy to keep it outside.

For us, over the whole life cycle, buildings should enhance people's health and wellbeing while having a reduced footprint on the planet. They should offer better economic value and quality for the developers, owners and occupants.

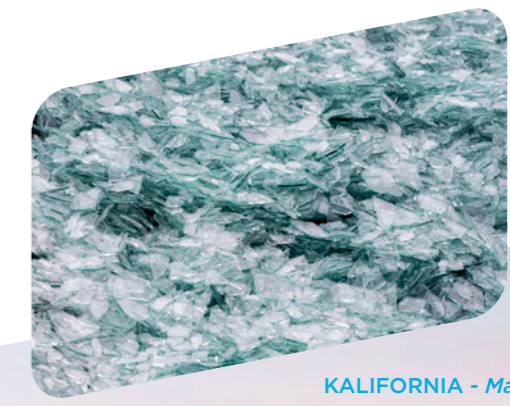
Our mission is to facilitate the shift towards sustainable construction by offering glass solutions that prioritize both sustainability and performance. This means that we strive to deliver innovation, design and cost-efficiency through



ORAÉ® is the world's first low-carbon glass, with a verified Environmental Product Declaration (EPD) setting a new standard at 6.64kg CO₂ eq./m² (from Cradle-to-Grave for a 4mm substrate).

It is produced by combining high recycled glass content (64% according to ISO 14021:1999) and renewable electricity. As a result, ORAÉ® offers a carbon footprint reduction of 42% compared to our European baseline product.

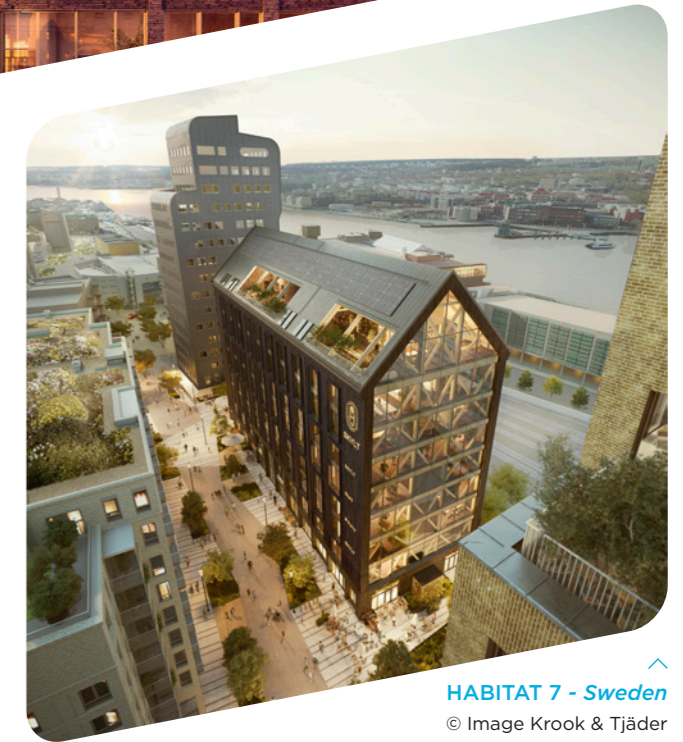
Intended for use in the glazed parts of a facade, COOL-LITE® ORAÉ® is a perfect response to the stricter sustainability requirements of the building industry without any compromise on technical or aesthetic performance.



↑
KALIFORNIA - Malakoff, France >
 ©Ateliers 2/3/4



↑
CARRÉ INVALIDES - France
 ©Nexity DR



↑
HABITAT 7 - Sweden
 © Image Krook & Tjäder

COOL-LITE® ORAÉ® is available with our highly selective solar control coatings. Contact us for more information.

PARTNERSHIPS AND SERVICES

Saint-Gobain Glass International has partnered with the most widely used specification writing service providers in North America: “MasterSpec” and “BSD SpecLink”. Most of our widely used Saint-Gobain Glass products are listed in the specifier’s documents created by them and can be easily accessed by Saint-Gobain Glass writers at all major architectural firms in North America.

MasterSpec®

a product of The American Institute of Architects

- Placement of product information, catalog, Product MasterSpec, link to BIM content and more in front of the specifier at the point of product decision.
- Industry leading specifications software system that provides building product manufacturers with timely exposure to specifiers.
- Ensure that the industry is using highest quality specifications (with regular updates).
- 6,000 Architects and 60,000 users.
- Product MasterSpec saves the specifier time and money by providing a pre-edited spec written for a particular product section.
- A product of AIA (The American Institute of Architects).

BSD SpecLink

- Architects, engineers and specifiers use SpecLink to produce their project specifications, maintain office masters, and to specify products like Saint-Gobain Glass International.
- An advanced specification writing application built for optimal project collaboration.
- 50,000+ projects created annually using SpecLink-E.
- 23,000+ Design Professionals using SpecLink Globally.
- A product of CSI (Construction Specifications Institute).

AIA Continuing Education Provider

AIA CES PROGRAM

Saint-Gobain Glass in North America is registered as an AIA CES approved provider. Participate in one of our training courses and earn one AIA/CES learning unit:

- **Glass Selection Criteria for Facades:**
 - Credit: 1 LU/HSW
 - Course code: SGG#11
- **Optical Distortion in Architectural Glass Façades:**
 - Credit: 1 LU
 - Course code: SGG#21
- **Strain Pattern in Architectural Glass:**
 - Credit: 1 LU
 - Course code: SGG#31

CLUB 4 PRO

CLUB 4 PRO is dedicated to the best glass processors. This program aims to enhance your business through the sale and promotion of Saint-Gobain Glass products and services.

The program is based in “4 pros”:

- Proximity
- Professionalism
- Profitability
- Progress

SAINT-GOBAIN GLASS TRAINED PROCESSORS

A network of trained local glass processors benefits from extensive audits conducted by experts from Saint-Gobain to ensure the right quality of glass processing at all stages before it reaches your project site.

KEY GLAZING PERFORMANCE FACTORS

■ g-VALUE / SHGC

Total solar energy entering into the building. Value between 0 and 1. The lower the SHGC, the more efficient the glazing is in blocking solar entry.

■ U-Value

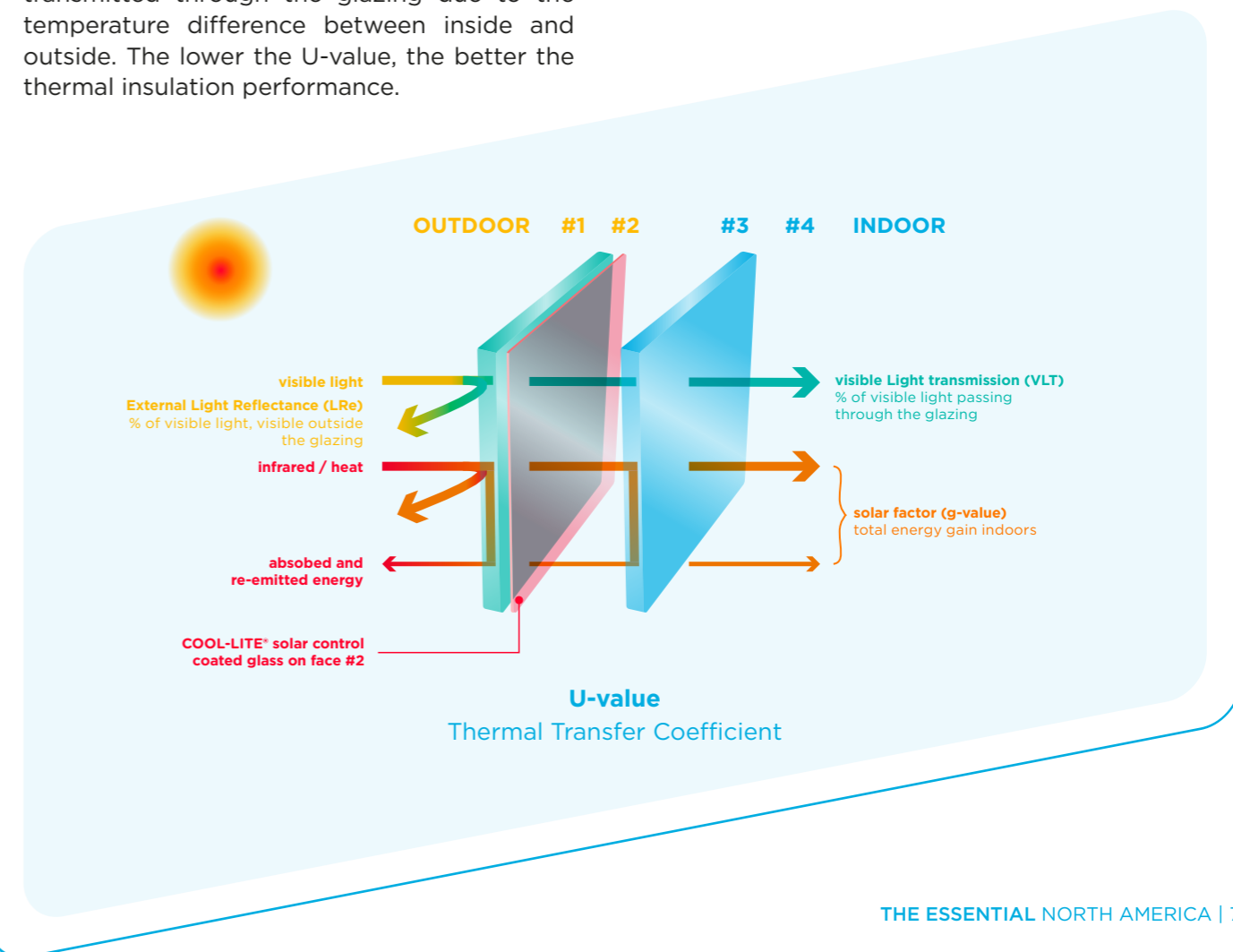
Thermal transfer coefficient. Quantity of heat transmitted through the glazing due to the temperature difference between inside and outside. The lower the U-value, the better the thermal insulation performance.

■ LSG / SELECTIVITY

Ratio between the light transmittance (VLT) and the solar heat gain coefficient (SHGC). The higher the LSG, the better the glazing is in reducing more solar energy than visible light.

■ Shading Coefficient (SC)

SC = SHGC / 0.87



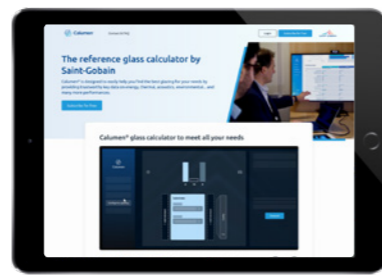
OUR DIGITAL TOOLS



CALUMEN® THE REFERENCE GLAZING CALCULATOR BY SAINT-GOBAIN GLASS

Calumen® is a glazing configurator designed for all building professionals, whatever their level of expertise in glass products: architects, designers, engineering offices, consultants, façade makers, window manufacturers, glass processors and general contractors.

- Determine the light, energy, thermal or acoustic performances of your glazing
- Find a suitable glazing for your project based on its required performance values
- Personalize settings such as type of glazing, type of coating, glass and cavity thickness
- Get an illustration of the aesthetic of the façade
- Make comparisons between our products to do the best choice
- Save your glazing configuration for further access at any time
- Calculate the carbon footprint of your glazing*.



Free and user-friendly (online version without software to install): **Calumen® is the perfect tool for finding the right glass for architectural projects of any size.**

Join our thousands of users and create an account on Calumen® here: www.calumen.com

*Carbon footprint values presented are estimations based on the Life Cycle Analysis of our European products (A1-A3). Only complete Environmental Product Declaration can be verified by an external third party. The value is calculated regarding the composition computed based on the standard EN 15804+A2 (2019).



AVAILABLE FOR WORLDWIDE
USERS IN 13 LANGUAGES:
<https://calumen.com>



GLASSPRO THE PHYSICO-REALISTIC GLASS RENDERING SERVICE BY SAINT-GOBAIN GLASS

Saint-Gobain Glass makes easier the choice of glazing for architects with GlassPro, the digital service that enables professionals to accurately predict the future appearance of their façades, going far beyond traditional renderings. A tool that radically transforms the decision-making process.

GlassPro consists of 3 services:



- **GlassPro App**, a user-friendly app for initial glazing selection with high-definition visualization



- **GlassPro Live**, which allows architects to obtain a faithful simulation of their project's future appearance



- **GlassPro 360**, the latest Virtual Reality service which further optimize the user experience by enhancing the immersive and comparative functions of GlassPro Live



CALUMEN® GALLERY THE REFERENCE PROJECT WEBSITE FOR GLASS FAÇADES

Come and explore our architectural references around the world showing a wide range of glass solutions, innovations and aesthetic options for the building envelope.

Discover buildings with exceptional design, offering sustainable living spaces, and making our environment pleasant to live in. also available on the page.

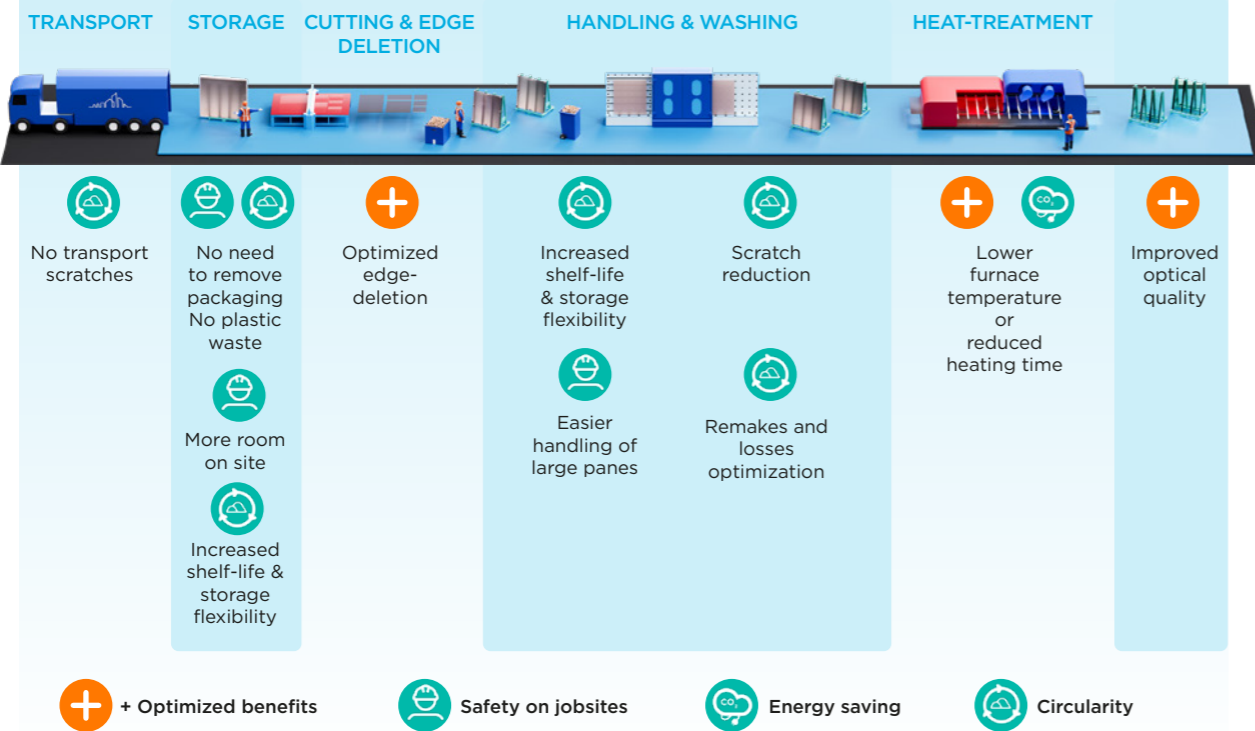


EASY PROCESSING EASYPRO®

EASYPRO® is a revolutionary and unique temporary surface protection developed and offered exclusively by Saint-Gobain Glass. Deposited

on to-be-tempered coated glass, it delivers effective protection against mechanical damage as well as ageing, during transport and processing, from deposition of the coating until tempering. During tempering, EASYPRO® simply burns off without leaving any residue inside or outside the furnace and without any negative impact on the environment or personal health and safety.

NOW OPTIMIZED FOR AN EVEN EASIER AND SUSTAINABLE PROCESSING

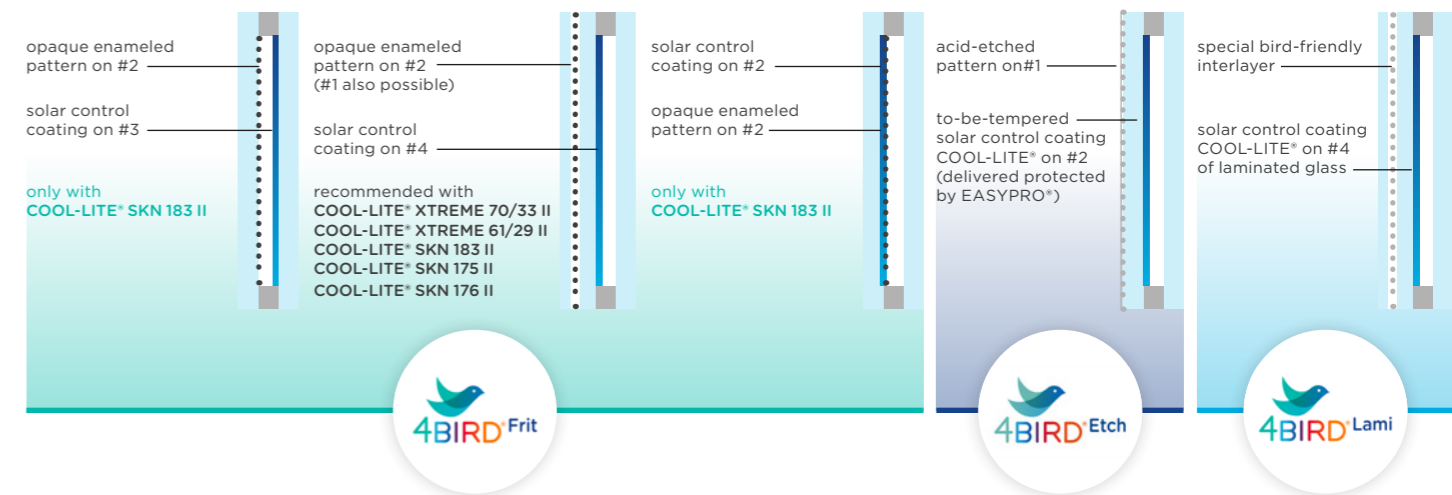


GET TO KNOW MORE ABOUT EASYPRO®

4BIRD® EFFECTIVE BIRD PROTECTION IN GLASS ARCHITECTURE

4BIRD® is a full range of solutions to answer the growing demands of bird friendly glass and glazing, combining Saint-Gobain Glass' COOL-LITE® solar control coated glass with certified pattern made using different processing technologies, creating thus "visible" contrast for birds in order to reduce collision.

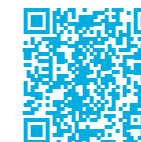
The combination of solar control glass and effective bird protection, offer both sustainable solutions for the preservation of the biodiversity and a wiser energy consumption of building, while keeping a homogeneous and neutral external aesthetic for the entire façade. Sustainability & protection of biodiversity, aesthetics & design, daylighting comfort and energy saving are some of the benefits of this range.



VISIT OUR WEBSITE



GET IN CONTACT WITH US



WARM EDGE SPACER BARS



HIGH ENERGY EFFICIENCY MEETS OPTIMAL LIVING COMFORT

Swisspacer is at the heart of energy saving windows and façades. Warm edge spacer bars insulate the edges of an energy efficient sealed unit. They keep the panes of glass apart and maintain the integrity of the gap that insulates a building from heat loss through windows. They also limit the occurrence of condensation at the perimeter of the unit.

What all Swisspacer spacer bars have in common is the particularly high quality of the original warm edge for sustainable windows and façades. The simple, elegant design, the wide range of colours and the velvety matt finish also enhance the look in every application.



VISIT OUR WEBSITE:
WWW.SWISSPACER.COM



SMART TINTABLE GLAZING



SAGEGLASS® IS THE PIONEER OF THE WORLD'S SMARTEST DYNAMIC GLASS

Electronically tintable SageGlass® tints or clears automatically to optimize daylight levels while preventing heat and glare without the need for blinds or shades.

SageGlass® delivers superior comfort, enhances occupant well-being and saves energy.

SageGlass® offers an array of smart glass solutions to suit different application needs.



CLEAR

Maximum sunlight when no glare control is needed

LIGHT

Moderate protection from glare and heat while still allowing sunlight in

MEDIUM

Stronger heat and glare protection with less sunlight admitted

FULL

Maximum available glare and heat control with minimal sunlight admitted



GET TO KNOW MORE ABOUT SAGEGLASS® PRODUCTS AND OFFER

OUR GLASS SOLUTIONS

Average performance data are based on NFRC standards for center-of-glass only in the glazing configuration 6mm | 12m | 6mm with coating on surface #2.

COATINGS	SUBSTRATE	Coating position	Visible Light Transmittance VLT(%)	Solar Heat Gain Coefficient (SHGC)	Shading Coefficient SC	Light to Solar Gain (LSG)	External Light Reflectance LRe (%)	Internal Light Reflectance Lri (%)	U-Value (NFRC) W/(m².K)			U-Value Btu/(h.ft².F)		Zoning criteria as per IECC - 2015 (SF <0.2) * good / ** better / *** best				Processing		Maximum size (in) max. processed size may vary according to processor	IGDB
									1/2" air	1/2" air (R)	5/8" (16mm) argon	1/2" air	5/8" argon	1 to 3	4	5 & 6	7 & 8	Annealed Version Available	Screen-printing and enamelling		
NEUTRAL																					
COOL-LITE® XTREME 70/33 II	PLANICLEAR	#2	70	0.30	0.34	2.3	11	13	1.62	0.62	1.40	0.28	0.24		***	***	***	x		126x709	21053
COOL-LITE® XTREME 61/29 II	PLANICLEAR	#2	61	0.27	0.31	2.3	11	15	1.61	0.61	1.41	0.29	0.24		***	***	***	x		126x709	21068
COOL-LITE® XTREME 51/23 II New	PLANICLEAR	#2	51	0.23	0.26	2.2	13	18	1.61	0.62	1.39	0.28	0.24	***	**	**	**	x		126x709	?
COOL-LITE® XTREME 50/22 II Phased out	PLANICLEAR	#2	47	0.20	0.23	2.4	16	18	1.61	0.62	1.39	0.28	0.24	***	**	**	**			126x709	21076
COOL-LITE® SKN 183 II	PLANICLEAR	#3	74	0.47	0.54	1.6	13	12	1.61	0.62	1.39	0.28	0.24		***	***	***			126x709	?
COOL-LITE® SKN 183 II	PLANICLEAR	#2	74	0.36	0.42	2.1	12	13	1.63	0.61	1.40	0.29	0.25		***	***	***	x		126x709	20896
COOL-LITE® SKN 176 II	PLANILUX	#2	68	0.34	0.39	2.0	13	15	1.61	0.62	1.39	0.28	0.25		***	***	***	x		126x709	21100
COOL-LITE® SKN 165 II	PLANICLEAR	#2	60	0.32	0.36	1.9	16	18	1.61	0.62	1.41	0.28	0.25		***	***	***	x		126x709	21112
COOL-LITE® SKN 154 II	PLANILUX	#2	50	0.26	0.30	1.9	18	22	1.61	0.62	1.39	0.28	0.25	**	**	**	**	x		126x709	21136
COOL-LITE® SKN 144 II	PLANILUX	#2	41	0.23	0.26	1.8	20	15	1.64	0.61	1.42	0.29	0.25	***	**	**	**			126x236	21160
COOL-LITE® KN 166 II	PLANICLEAR	#2	60	0.37	0.43	1.6	23	25	1.63	0.61	1.41	0.29	0.25			**	**			126x236	21224
COOL-LITE® KN 148 II	PLANICLEAR	#2	47	0.31	0.35	1.5	27	18	1.63	0.61	1.41	0.29	0.25	*	*					126x236	
COOL-LITE® ST 167	PLANILUX	#2	60	0.60	0.68	1.0	22	23	2.67	0.37	2.53	0.47	0.45					x		126x236	21232
COOL-LITE® ST 150	PLANILUX	#2	46	0.46	0.55	1.0	20	22	2.67	0.37	2.53	0.47	0.45					x		126x236	21248
EXTRA CLEAR																					
COOL-LITE® XTREME 70/33 II	DIAMANT	#2	71	0.30	0.35	2.4	11	13	1.62	0.62	1.40	0.28	0.25		***	***	***	x		126x709	21056
COOL-LITE® XTREME 61/29 II	DIAMANT	#2	61	0.27	0.31	2.3	11	15	1.61	0.62	1.35	0.28	0.24		***	***	***	x		126x709	21072
COOL-LITE® XTREME 50/22 II Phased out	DIAMANT	#2	48	0.20	0.23	2.4	16	18	1.61	0.65	1.38	0.28	0.24	***	**	**	**			126x709	21080
COOL-LITE® SKN 083 II	DIAMANT	#2	76	0.37	0.42	2.1	12	13	1.61	0.61	1.38	0.28	0.24		***	***	***	x		126x709	20904
COOL-LITE® SKN 076 II	DIAMANT	#2	71	0.35	0.40	2.0	13	15	1.61	0.62	1.39	0.28	0.25		***	***	***	x		126x709	21104
COOL-LITE® SKN 065 II	DIAMANT	#2	62	0.32	0.37	1.9	17	19	1.63	0.61	1.41	0.29	0.25		***	***	***	x		126x709	21116
SILVER REFLECTIVE																					
COOL-LITE XTREME 51/23 II	DIAMANT	#2	51	0.48	0.25	2.3	13	18	1.61	0.62	1.39	0.28	0.24	***	**	**	**			126x709	?
COOL-LITE SKN 083 II	DIAMANT	#3	75	0.48	0.55	1.6	13	12	1.61	0.61	1.38	0.28	0.24	***	**	***	***			126x709	?
COOL-LITE® SKS 143 II	PLANILUX	#2	37	0.20	0.23	1.9	31	11	1.63	0.61	1.41	0.29	0.25	***	**	**	**			130x240	20877
COOL-LITE® KS 154 II	PLANILUX	#2	50	0.33	0.38	1.5	29	17	1.67	0.60	1.42	0.29	0.25		**	**				130x240	20795
COOL-LITE® KS 146 II	PLANILUX	#2	42	0.28	0.32	1.5	33	19	1.68	0.60	1.47	0.30	0.26		**	**				130x240	21336
COOL-LITE® KS 138 II	PLANILUX	#2	36	0.25	0.29	1.4	40	19	1.68	0.60	1.47	0.30	0.26	**	**	**				130x240	21320
COOL-LITE® KS 134 II	PLANILUX	#2	35	0.21	0.24	1.7	49	22	1.68	0.60	1.41	0.29	0.25	**	**	**				130x240	21320
COOL-LITE® ST BRIGHT SILVER	PLANICLEAR	#2	62	0.63	0.72	1.0	34	34	2.69	0.37	2.55	0.47	0.45			*	*	x		130x240	
COOL-LITE® ST BRIGHT SILVER	DIAMANT	#2	63	0.66	0.76	1.0	35	35	2.69	0.37	2.55	0.47	0.45			*	*	x		126x709	21228
COOL-LITE® ST 120	PLANILUX	#2	18	0.23	0.27	0.8	32	30	2.51	0.40	2.36	0.44	0.42	*				x		130x240	21280
COOL-LITE® ST 108	PLANILUX	#2	8	0.12	0.14	0.7	41	38	1.90	0.52	1.69	0.30	0.30	*				x		130x240	21296
GREY																					
COOL-LITE® SKN 376 II	PARSOL GREY	#2	33	0.23	0.26	1.4	6	13	1.61	0.62	1.39	0.28	0.24	**	**	*	*			126x709	
COOL-LITE® SKN 146 II	PLANILUX	#2	40	0.25	0.27	1.6	11	11	1.65	0.61	1.44	0.29	0.25	**	**	**	**			126x236	20888
LOW-E COATINGS																					
PLANITHERM® XN II	PLANICLEAR	#3	79	0.58	0.68	1.4	11	11	1.69	0.59	1.47	0.30	0.26			**	**	x		126x709	21424
LUX II	PLANILUX	#3	79	0.68	0.78	1.2	13	13	1.75	0.62	1.55	0.30	0.27			**	**	x		130x240	21457
ECLAZ II	PLANICLEAR	#3	82	0.66	0.76	1.2	11	11	1.68	0.60	1.47	0.30	0.26			**	**	x		126x236	20756
PLANITHERM® ONE II	PLANICLEAR	#3	71	0.48	0.55	1.5	22	23	1.64	0.61	1.42	0.29	0.25			**	**	x		130x240	21411

DGU values calculated with Planiclear as inner pane, except for extra clear appearance for which low-iron DIAMANT is used. Saint-Gobain Glass reserves the right to change product performance features without notice or obligation * The performance values shown are nominal and subject to variations due to manufacturing tolerances. * COOL-LITE® SKN 154 : LRI=22% * As our processing guidelines and product validation evolves regularly, and for any information related to processing conditions (tempering, bending, laminating...), please contact your TSM or local sales representative. Saint-Gobain recommends for tempered glass to perform a Heat Soak test following EN14179 to reduce the risk of Nickel sulfite (NiS) breakage.

SAINT-GOBAIN GLASS CARES ABOUT BUILDING BETTER
FOR PEOPLE AND THE PLANET, MAKING THE WORLD A BETTER HOME.



October 2025

**SAINT-GOBAIN GLASS
NORTH AMERICA**

USA HEADQUARTERS

20 Moores Road
Malvern, PA 19355
United States

Tel: +1 610-893-6000

CANADA OFFICE

6830 Avenue du Parc, Suite 203
Montreal, QC, H3N 1W7
Canada

Tel: +1-438-383-9444

glass.facade@saint-gobain.com
www.saint-gobain-glass.com